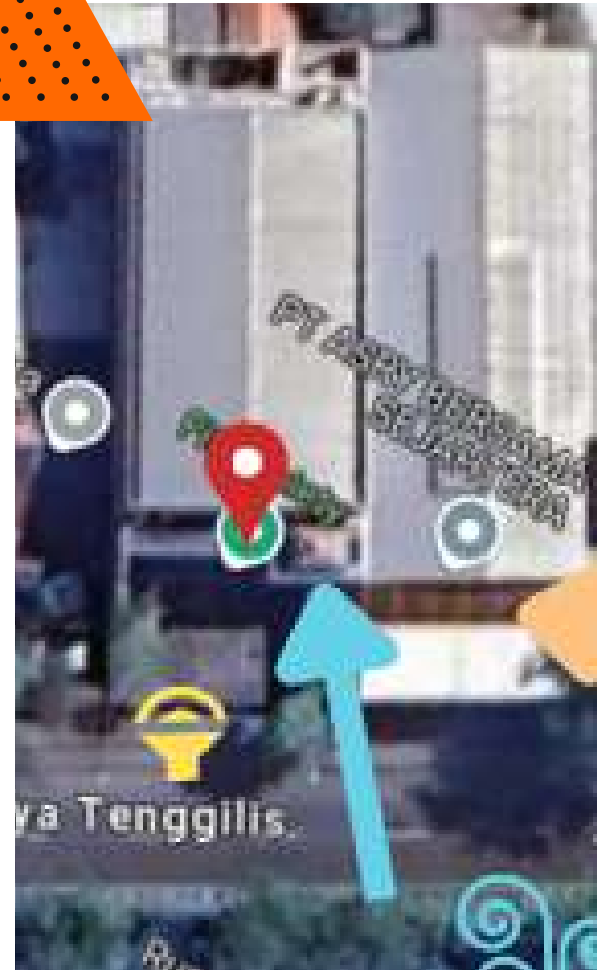




OBSERVE



Students observe physical environments and locations as well as how people behave and interact with one another. They ask questions, discuss their work with others, and consider what they observe. Students' empathy is developed during the design thinking comprehension and observation phases.

Data Eksisting

Fit Society Gym Center Surabaya

SITE DATA

Nama Bangunan:
 "Fit Society" Gym Surabaya, Jl. Raya
 Tenggilis No.39, Kendangsari, Kec. Tenggilis
 Mejoyo, Surabaya, Jawa Timur 60292
 Nomor Telp Store: 0838-7915-5552
 Kota Domisili: Surabaya
 Jumlah Lantai: 2
 Luas Bangunan: 1183.5 m²

LATAR BELAKANG

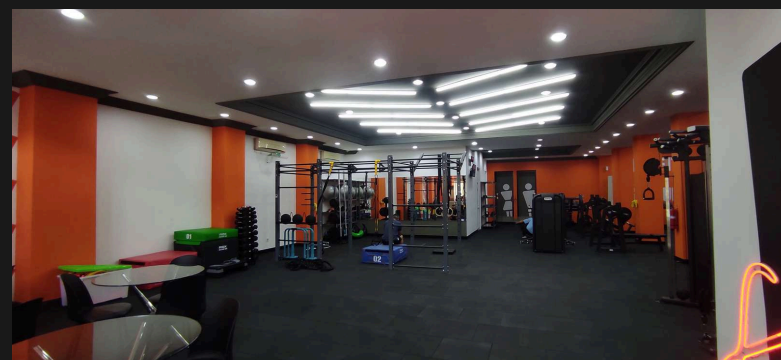
"Fit Society" Gym didirikan tanggal 18
 Desember 2023

TARGET CUSTOMER

1. Remaja (17-25 Tahun)
2. Dewasa (26-55 Tahun)

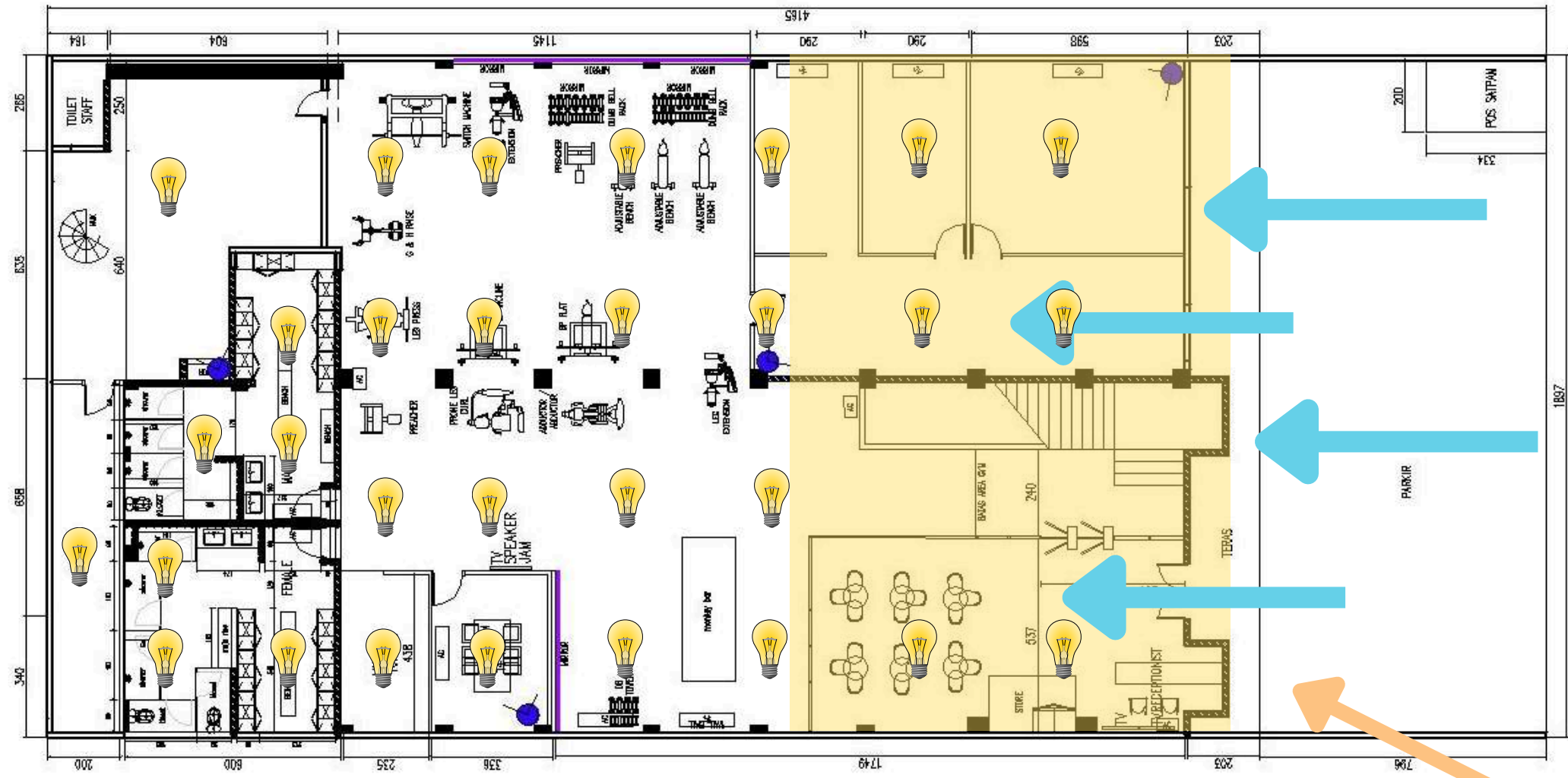
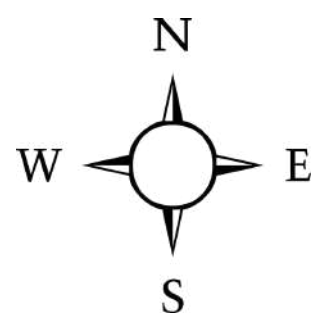
JAM OPERASIONAL

Senin - Sabtu, pukul 06.00 - 22.00 WIB
 Minggu, 08.00 - 20.00 WIB



Site Analysis

Tapak Dalam



Legenda



Arah Angin



Arah Angin



Sinar Matahari



Sumber kebisingan



Arah Sinar Matahari

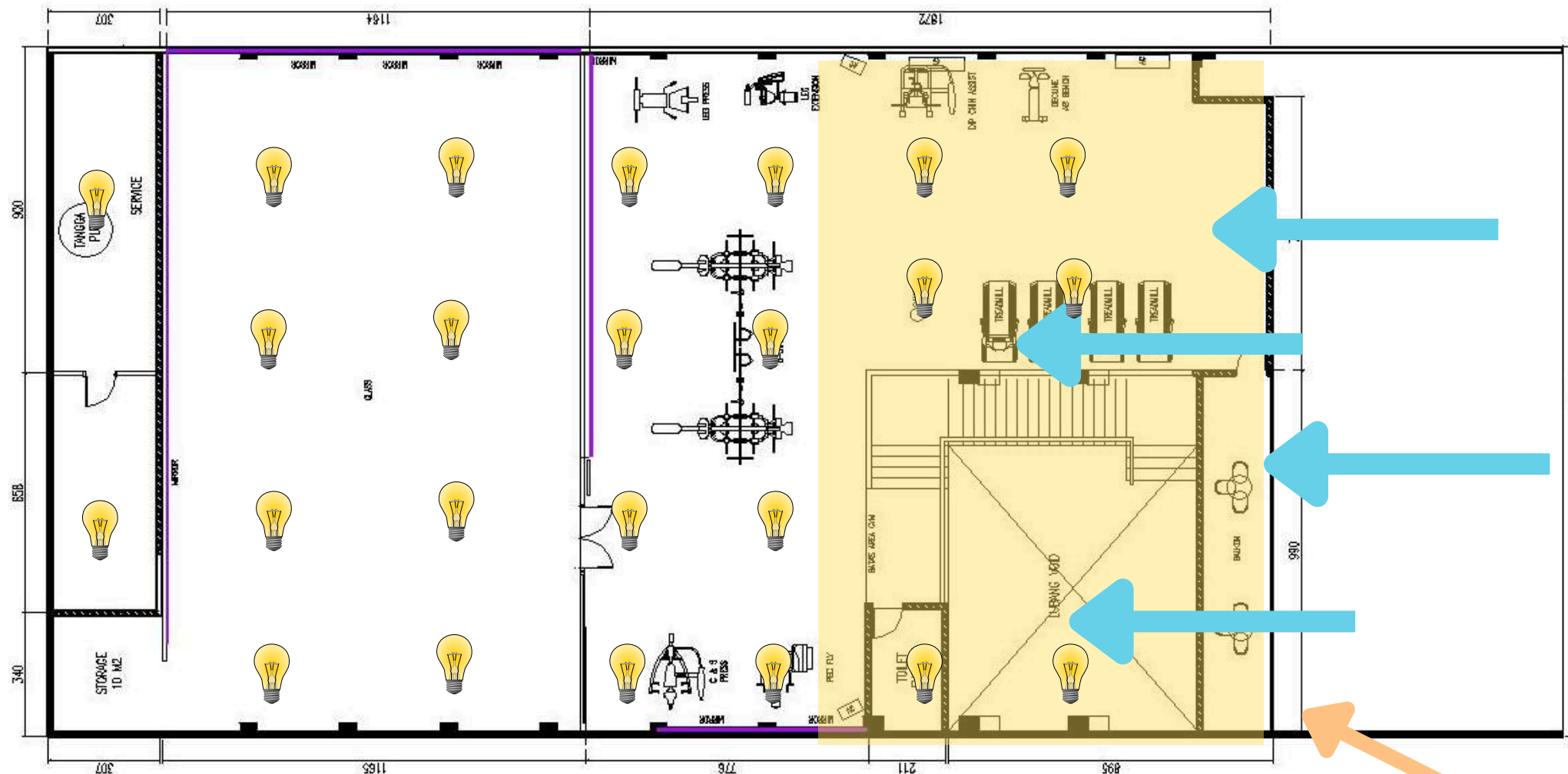
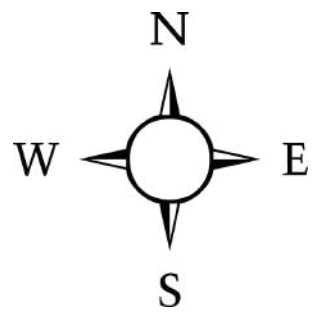


Sinar Pencahayaan buatan



Site Analysis

Tapak Dalam



Legenda



Arah Angin



Arah Angin



Sinar Matahari



Sumber kebisingan



Arah Sinar Matahari



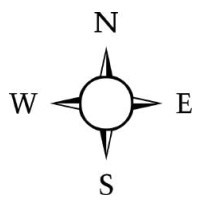
Sinar Pencahayaan buatan



Site Analysis



Tapak Dalam



View

- Utara: Ruko
- Timur: Jalan Raya
- Barat: Pemukiman Warga
- Selatan: Ruko

Pencahayaan

- Pencahayaan alami sebagai sumber utama pencahayaan dalam gedung saat siang hari
- Perlunya penataan pencahayaan buatan agar penerangan dalam ruang dapat lebih optimal pada sore dan malam hari, karena sinar matahari tidak dapat masuk hingga area belakang bangunan

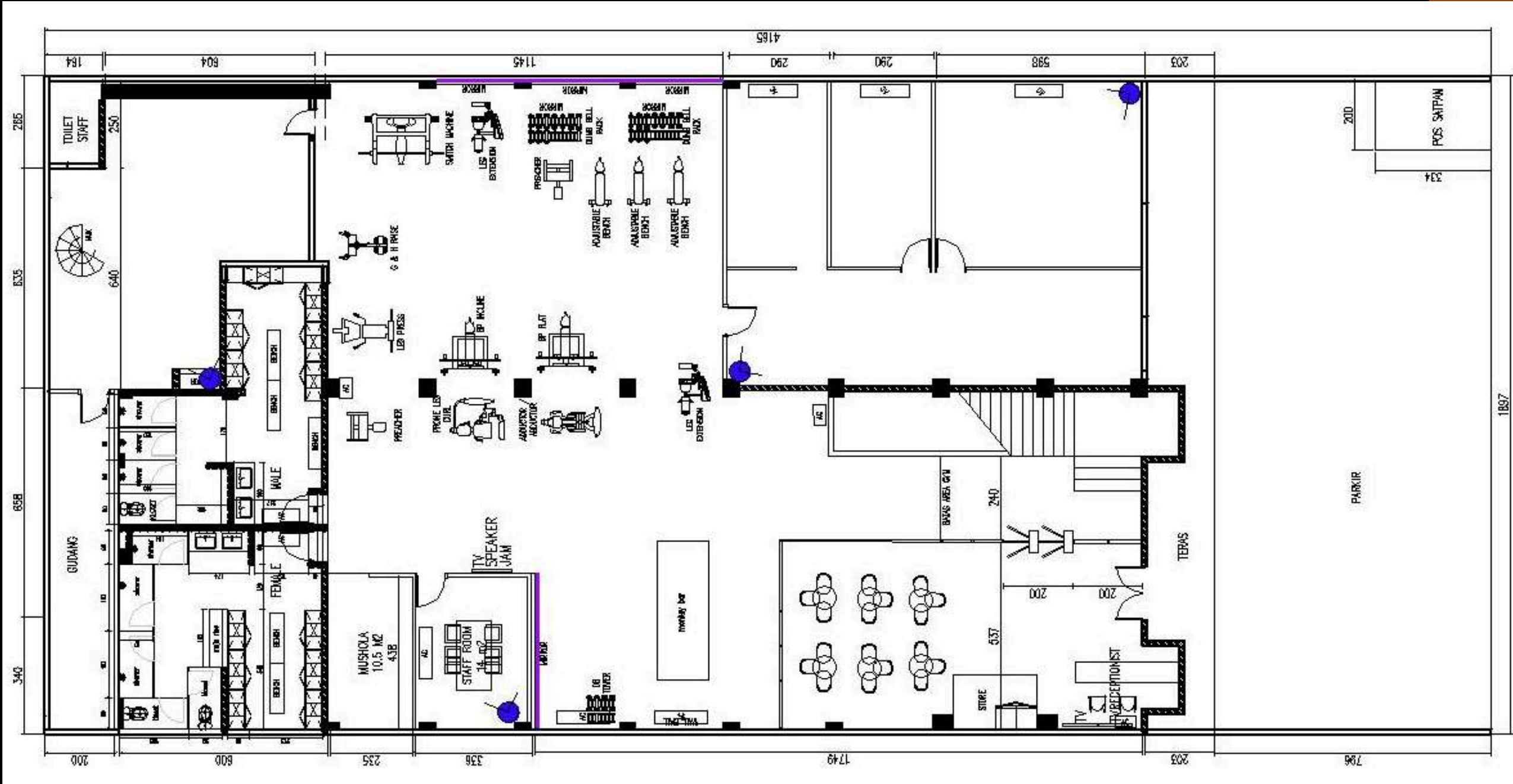
Kebisingan

- Kebisingan berasal dari kendaraan bermotor yang melewati jalan raya



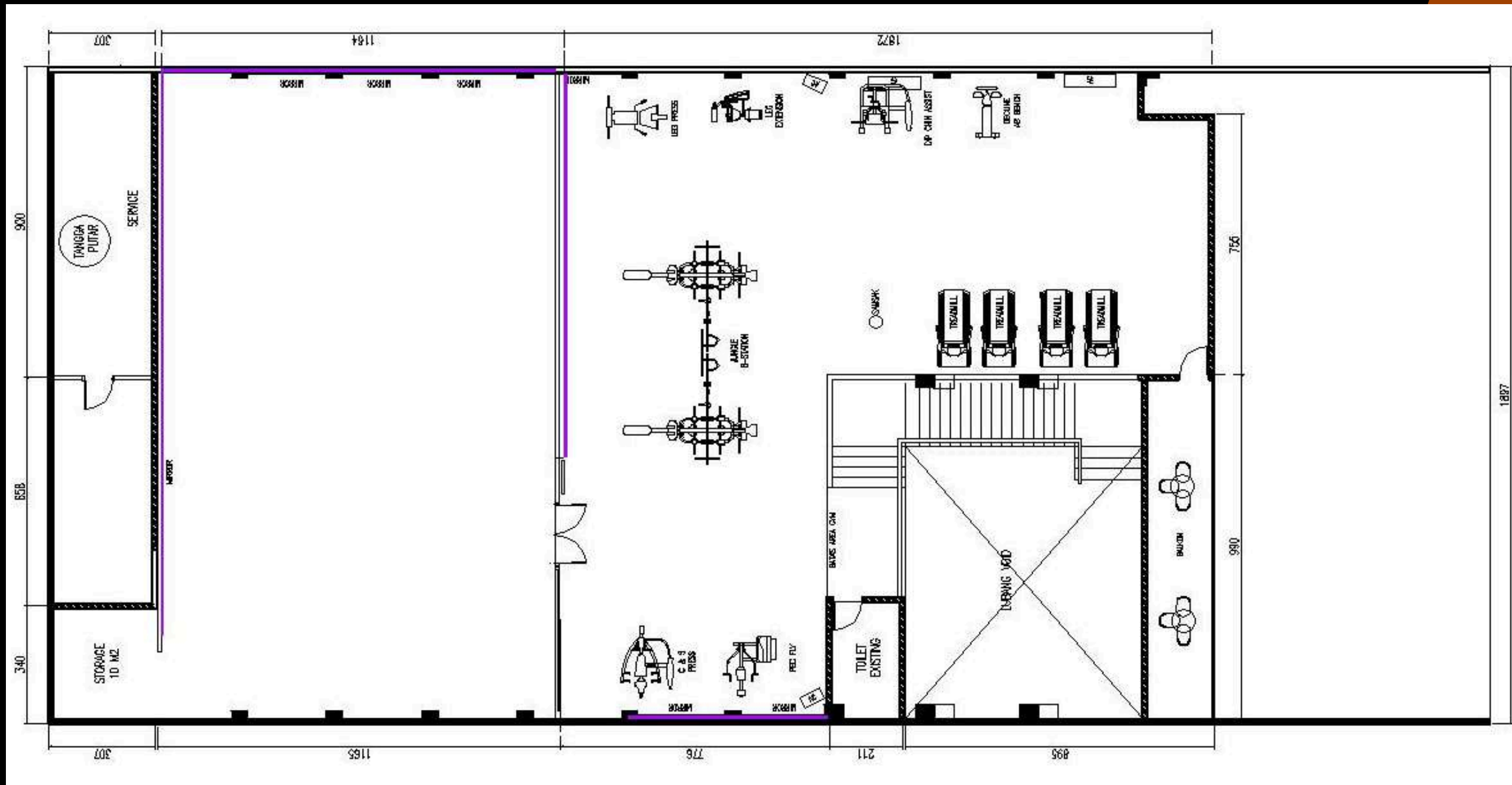
Data Eksisting

Layout Lantai 1



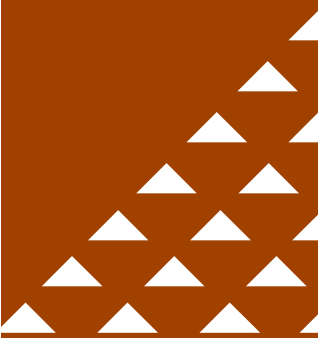
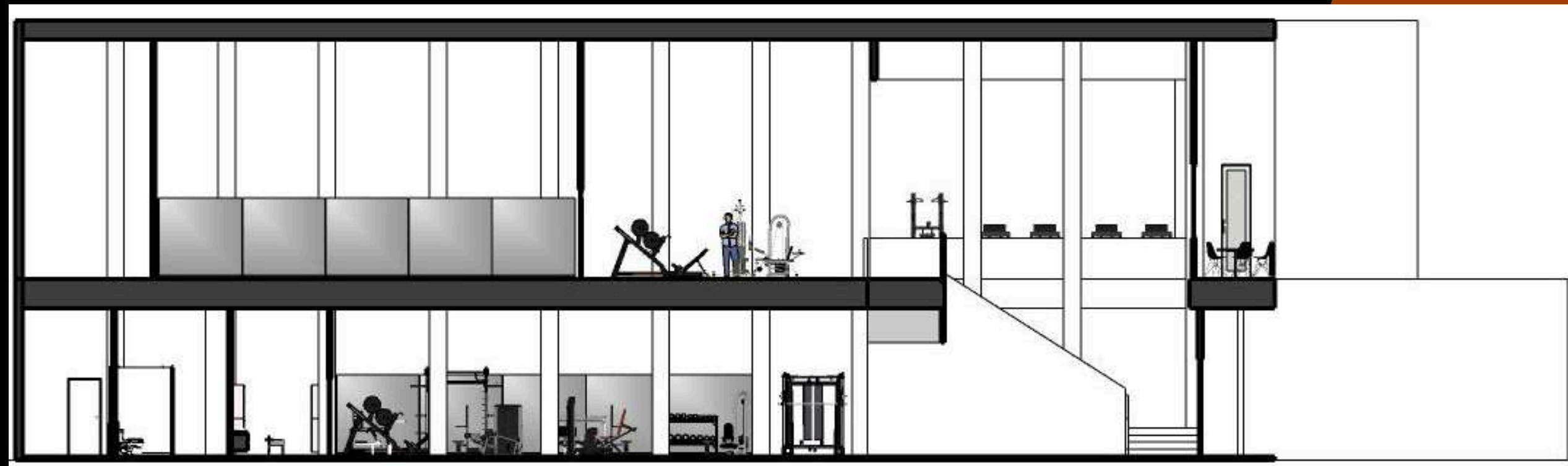
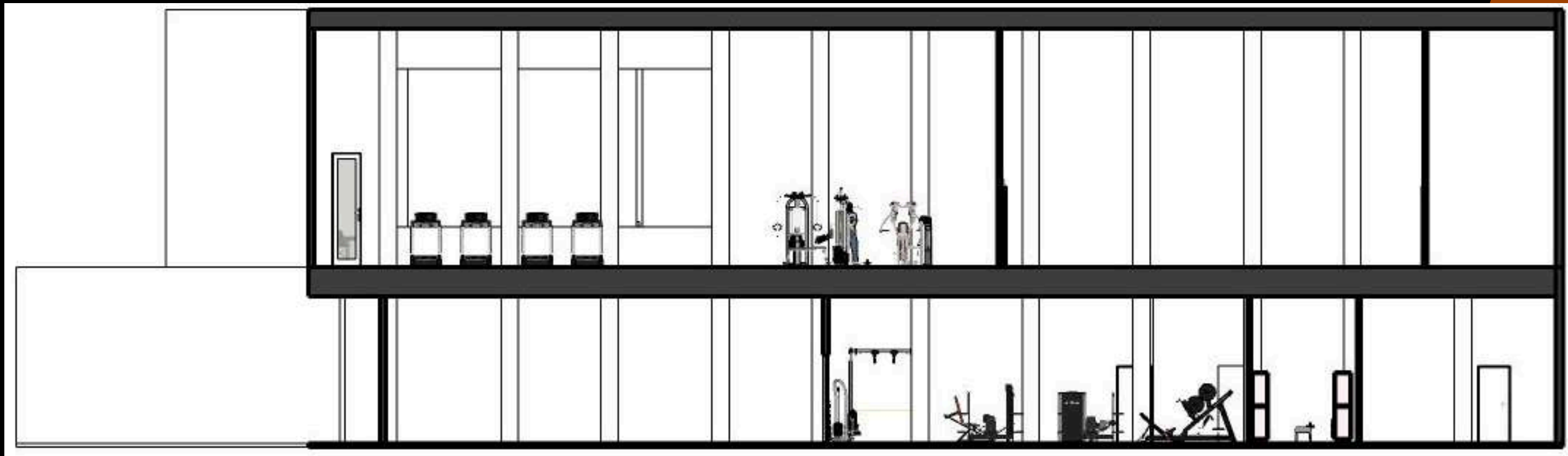
Data Eksisting

Layout Lantai 2



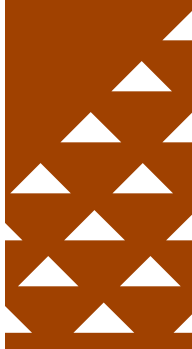
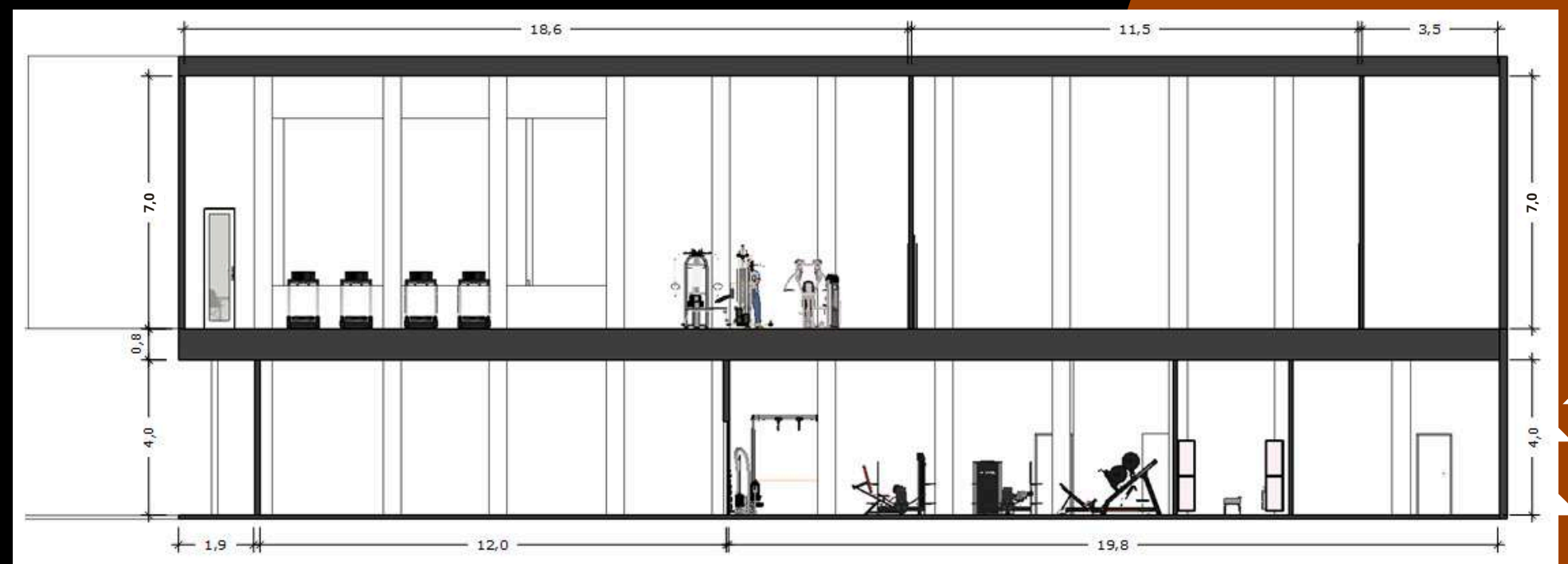
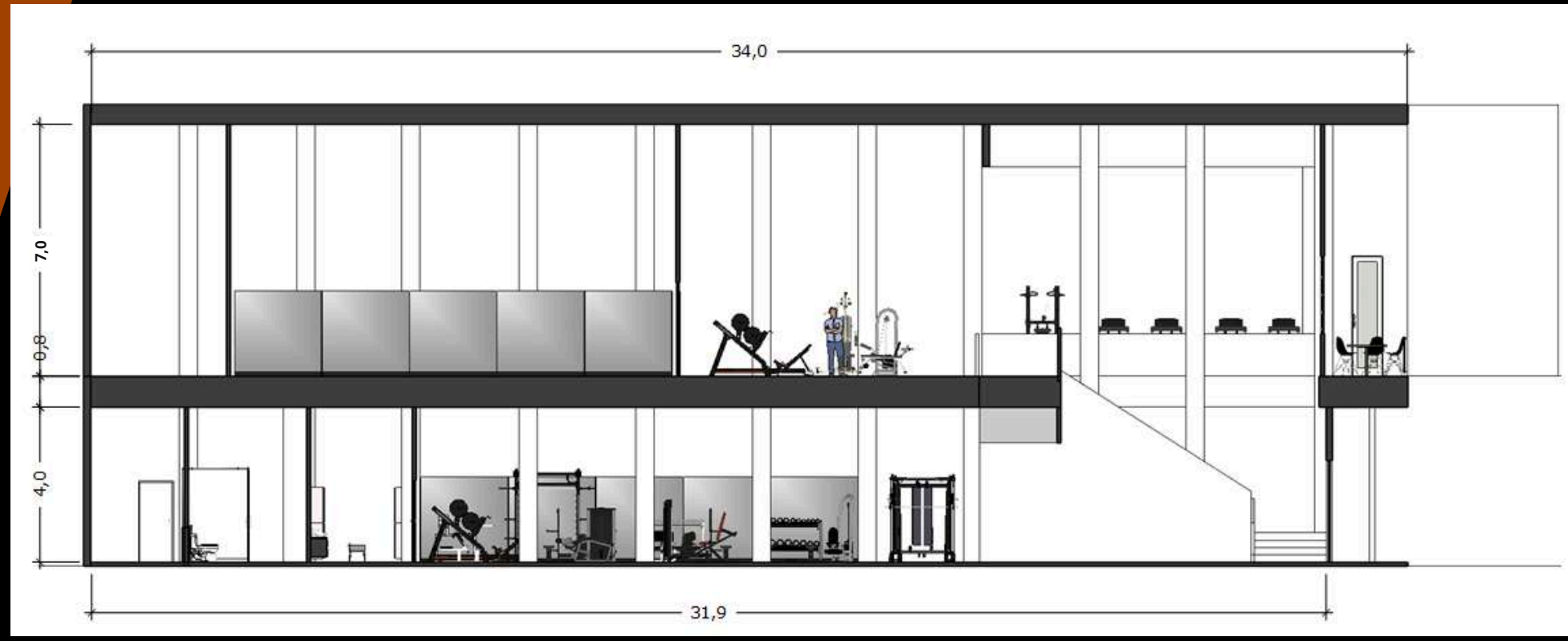
Data Eksisting

Potongan



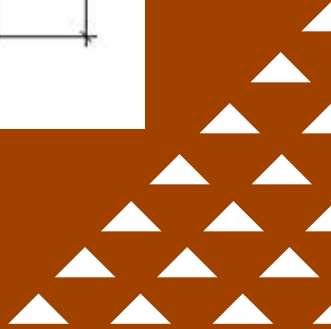
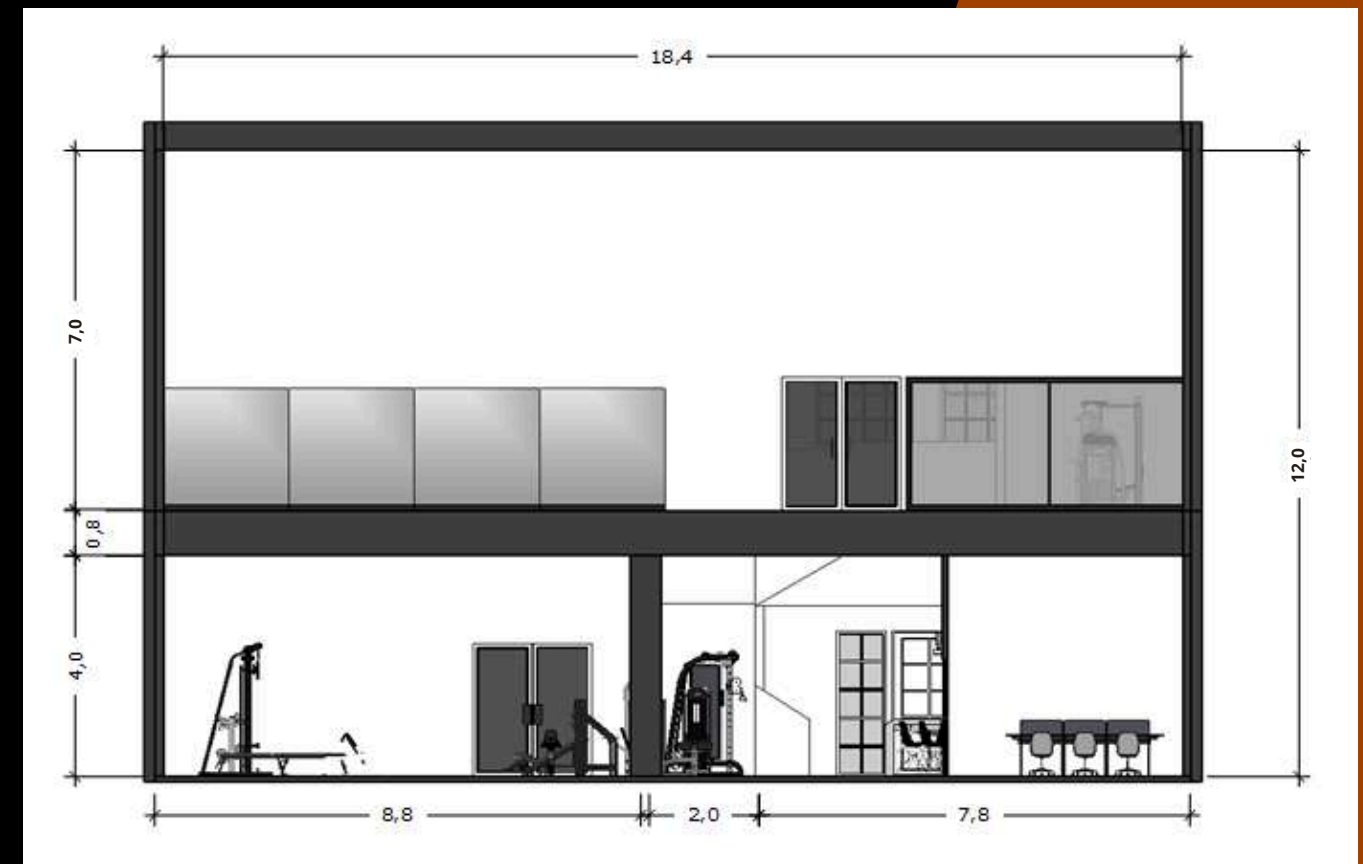
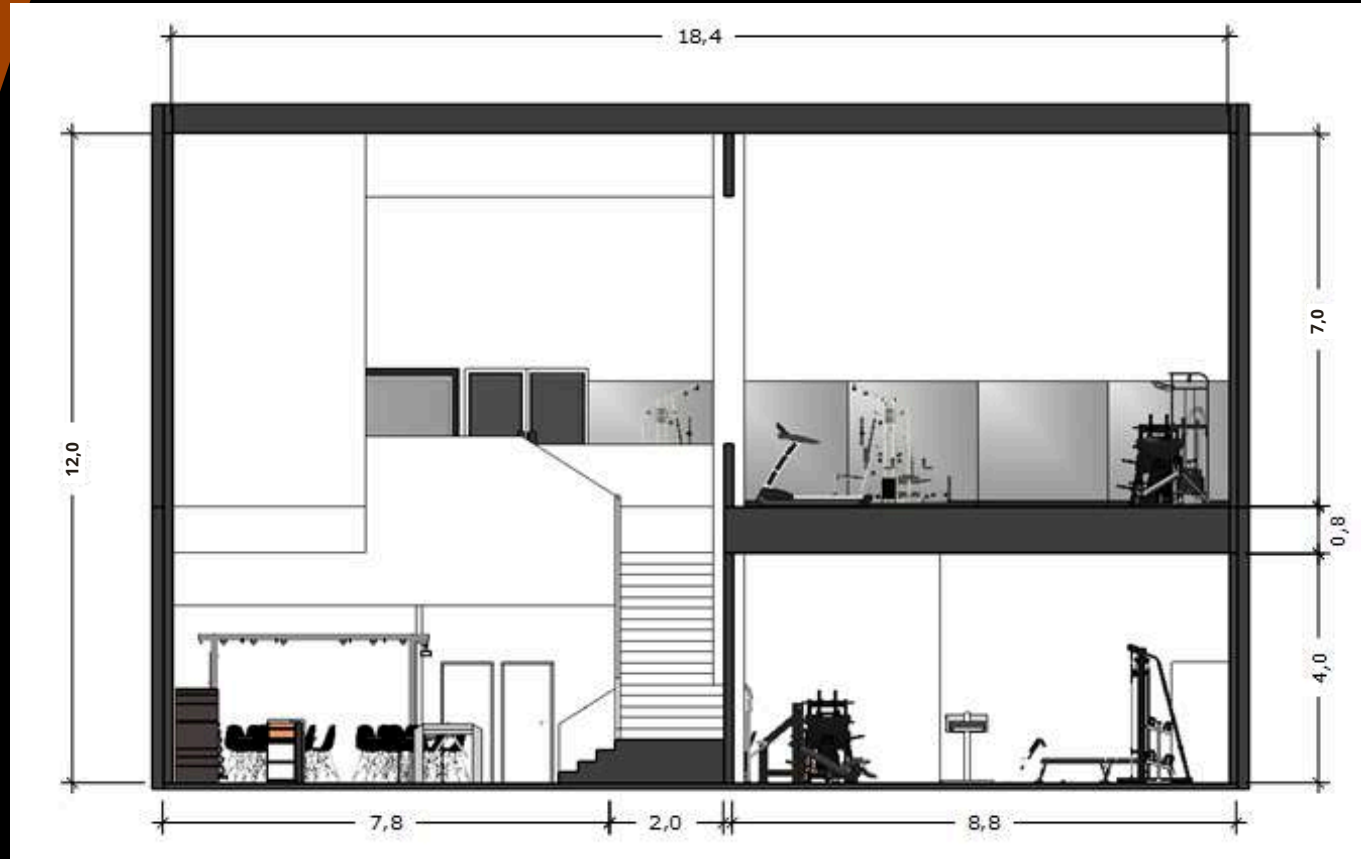
Data Eksisting

Potongan



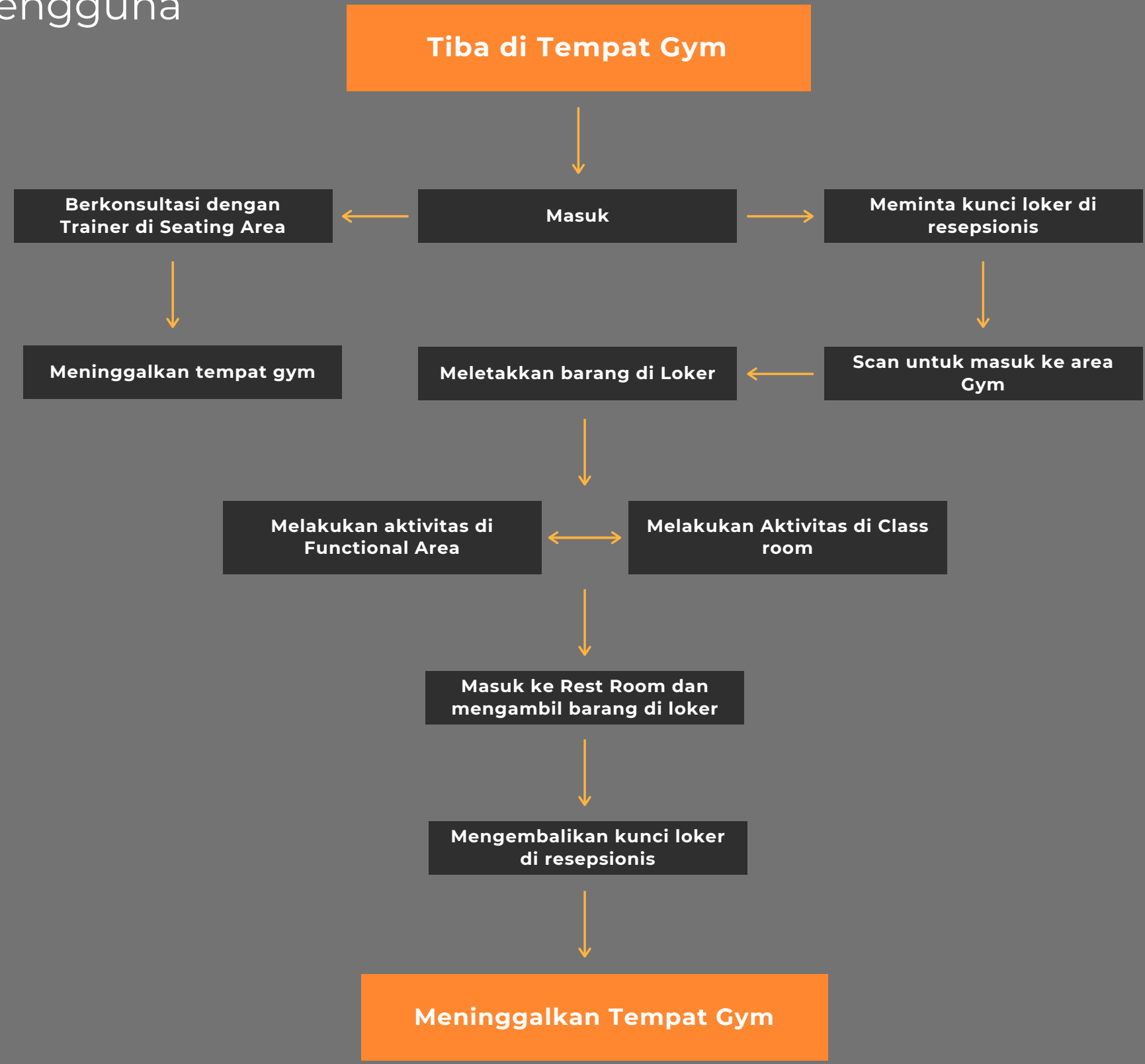
Data Eksisting

Potongan



Data Eksisting

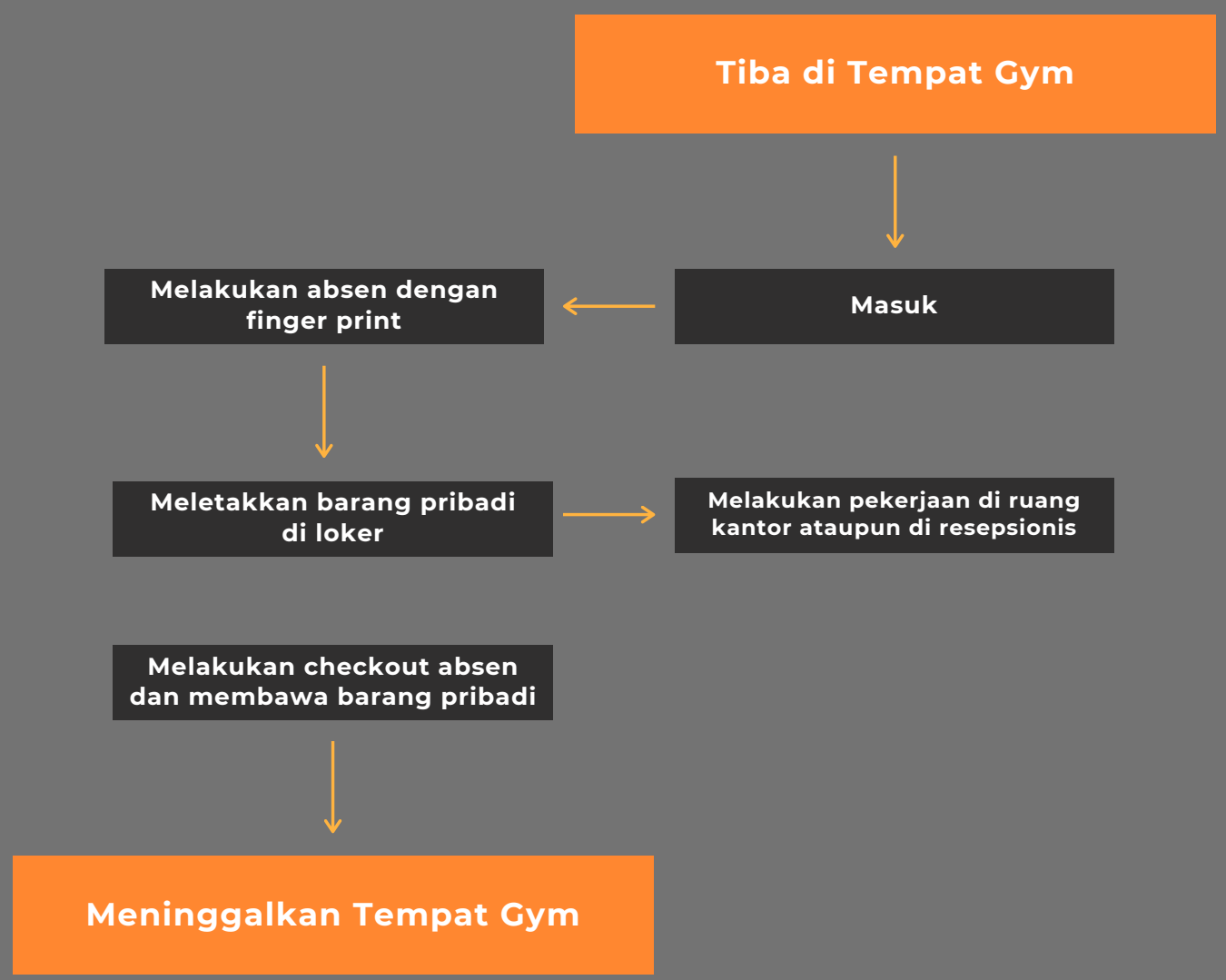
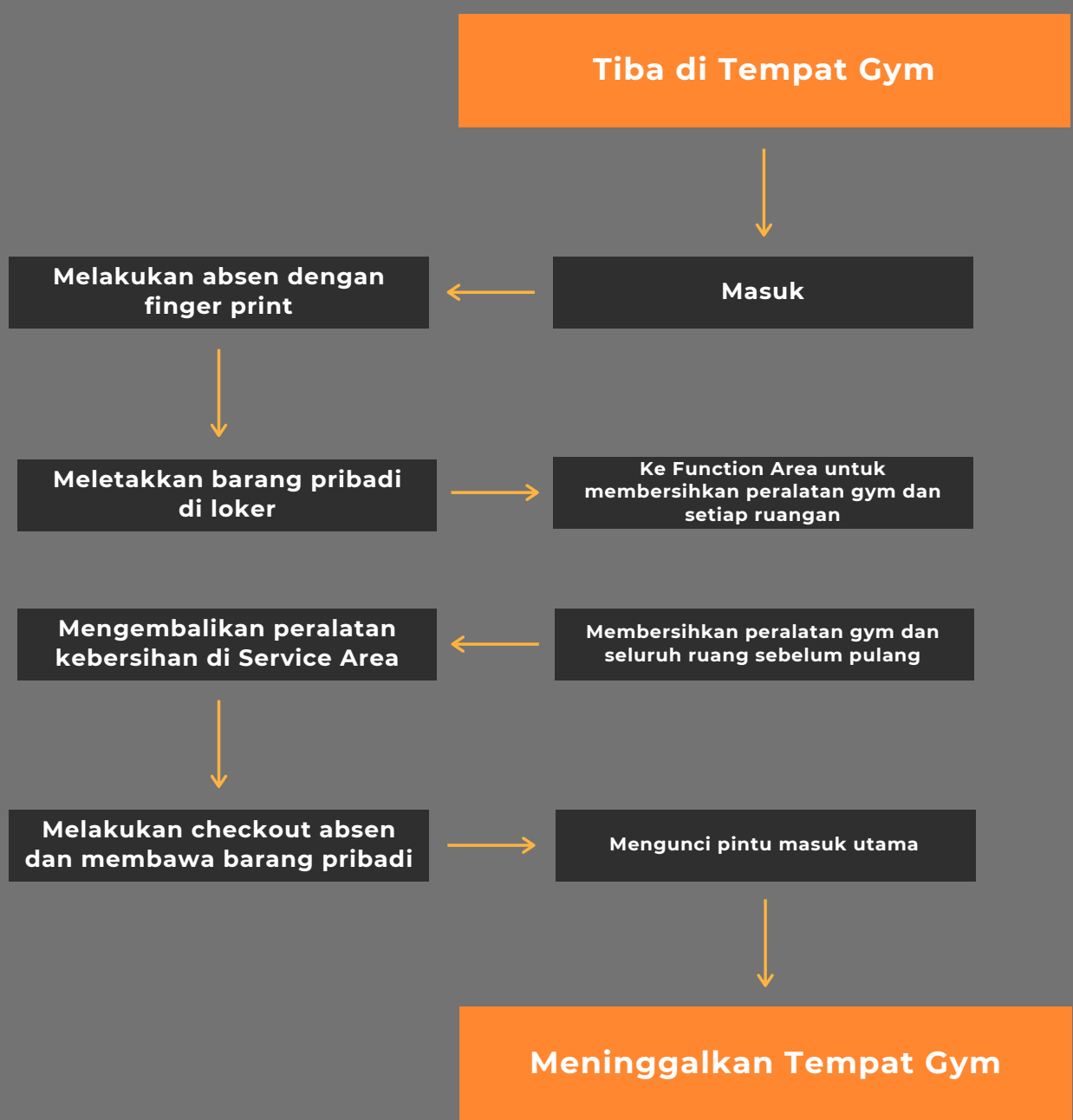
Data Aktivitas Pengguna



Data Eksisting

Data Aktivitas Cleaning Service

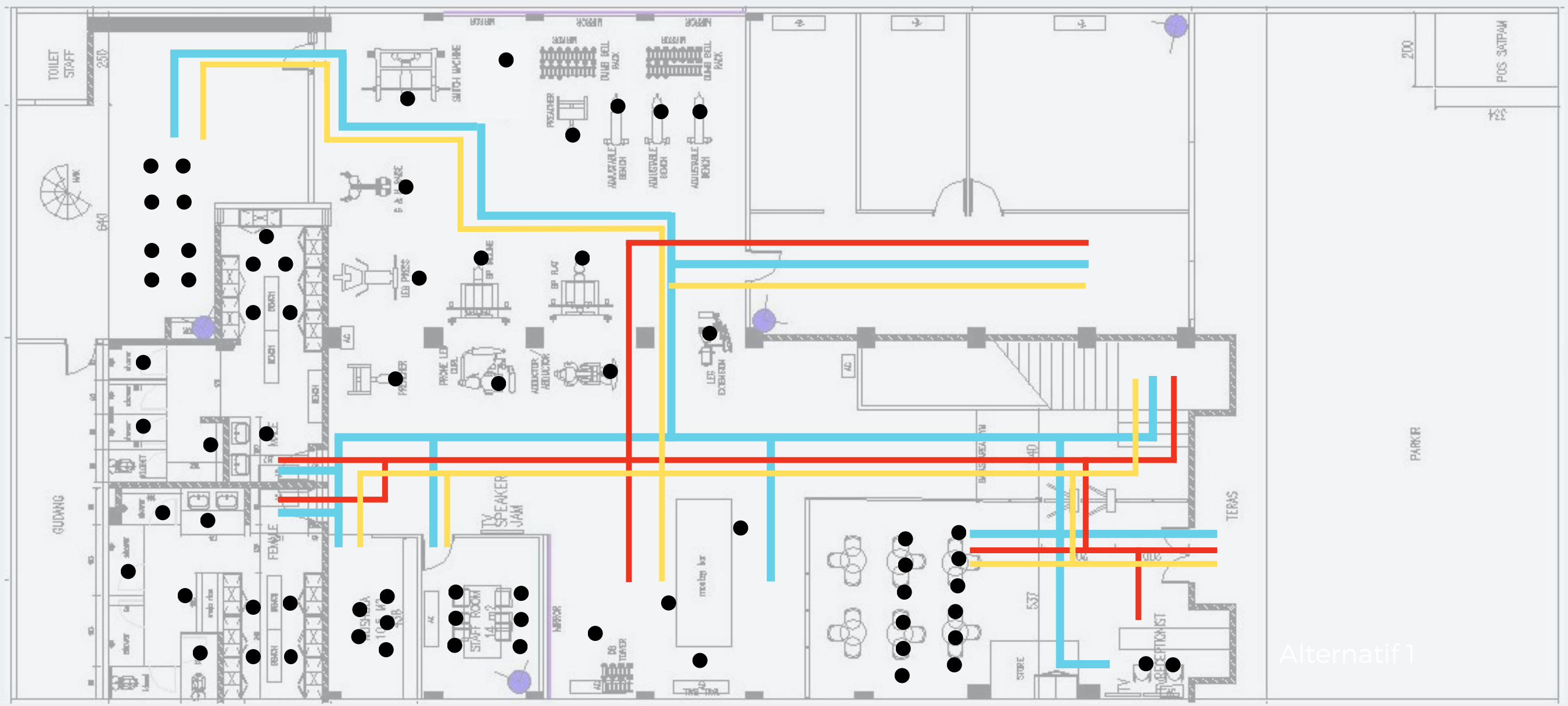
Data Aktivitas Staff



Pola Sirkulasi

Layout Lantai 1

- Staff Kantor
- Cleaning Service
- Owner
- Member Gym
- Trainer

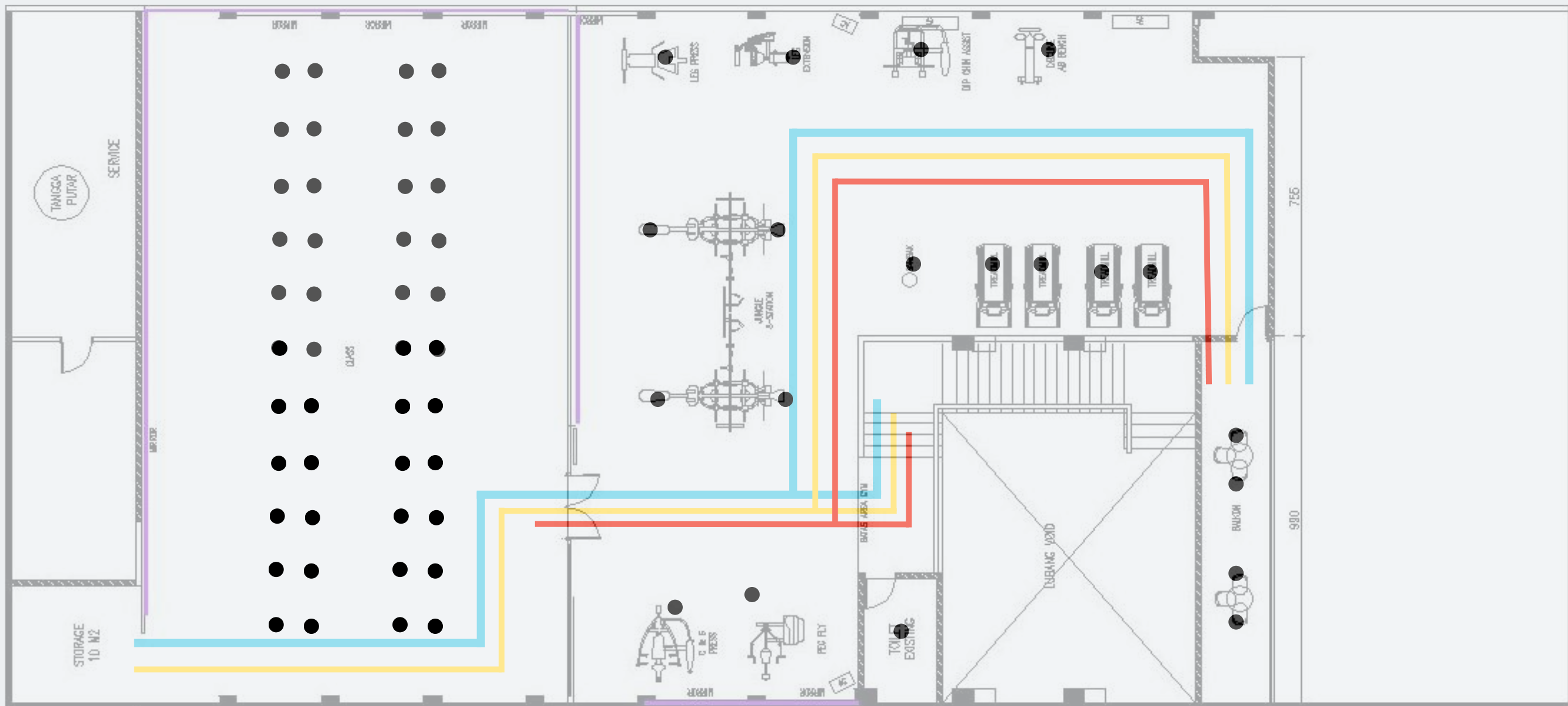


● Kapasitas Pengguna

Pola Sirkulasi

Layout Lantai 2

- • Staff Kantor
● • Cleaning Service
● • Owner
- • Member Gym
- • Trainer



● Kapasitas Pengguna

Data Eksisting

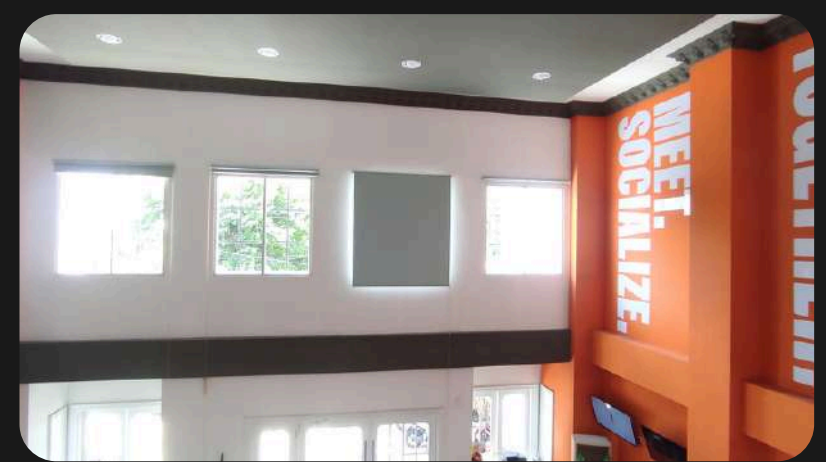
9 Elemen Interior

Environment

Penghawaan Buatan



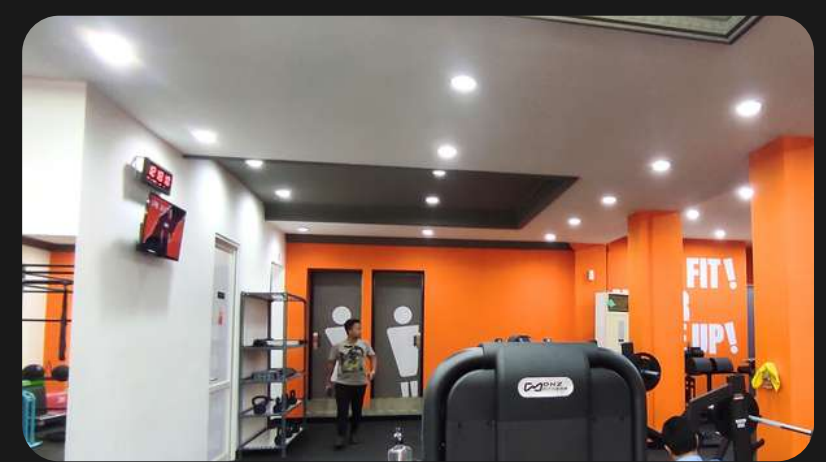
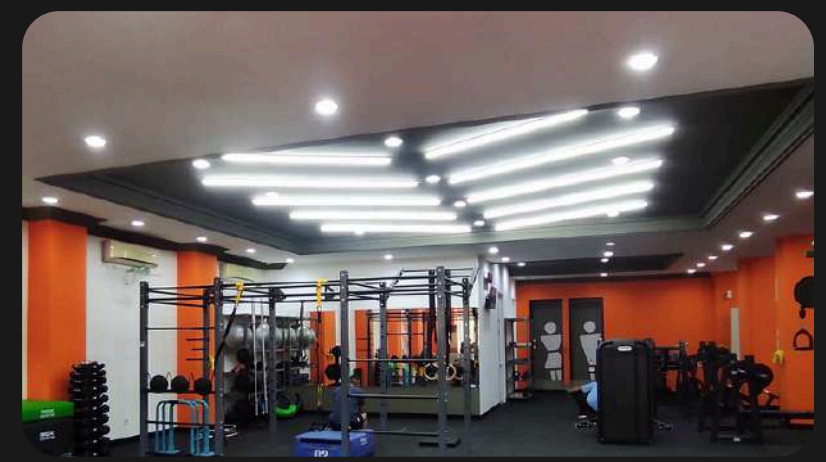
Penghawaan Alami



Support



Light



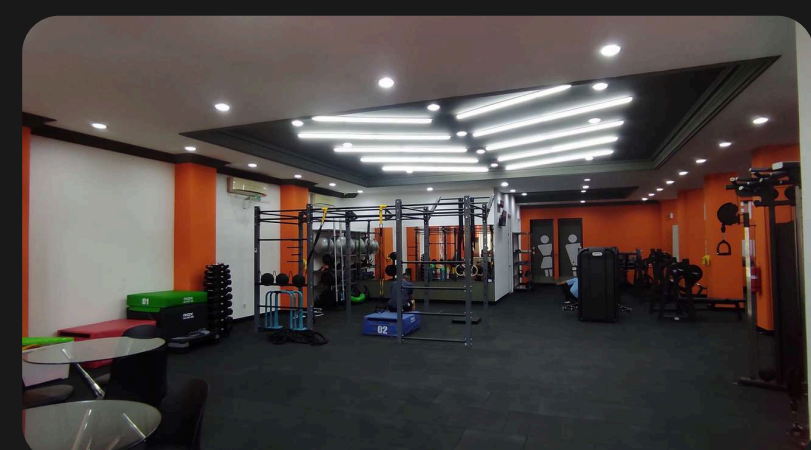
Data Eksisting

9 Elemen Interior

Enclosure

Ground Plan

Space



Data Eksisting

9 Elemen Interior

Display, Storage,
Worksurface



Decoration



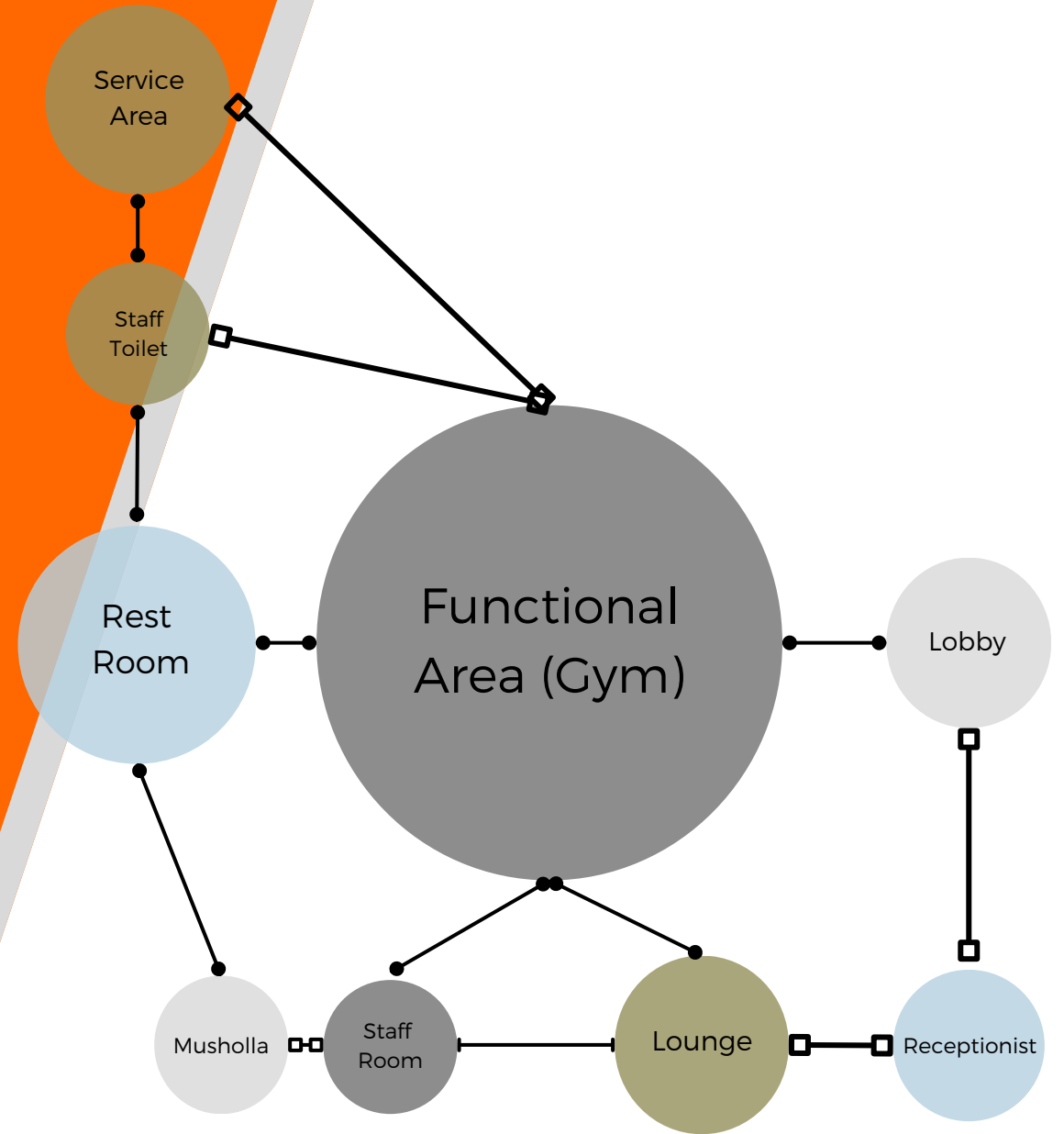
Information



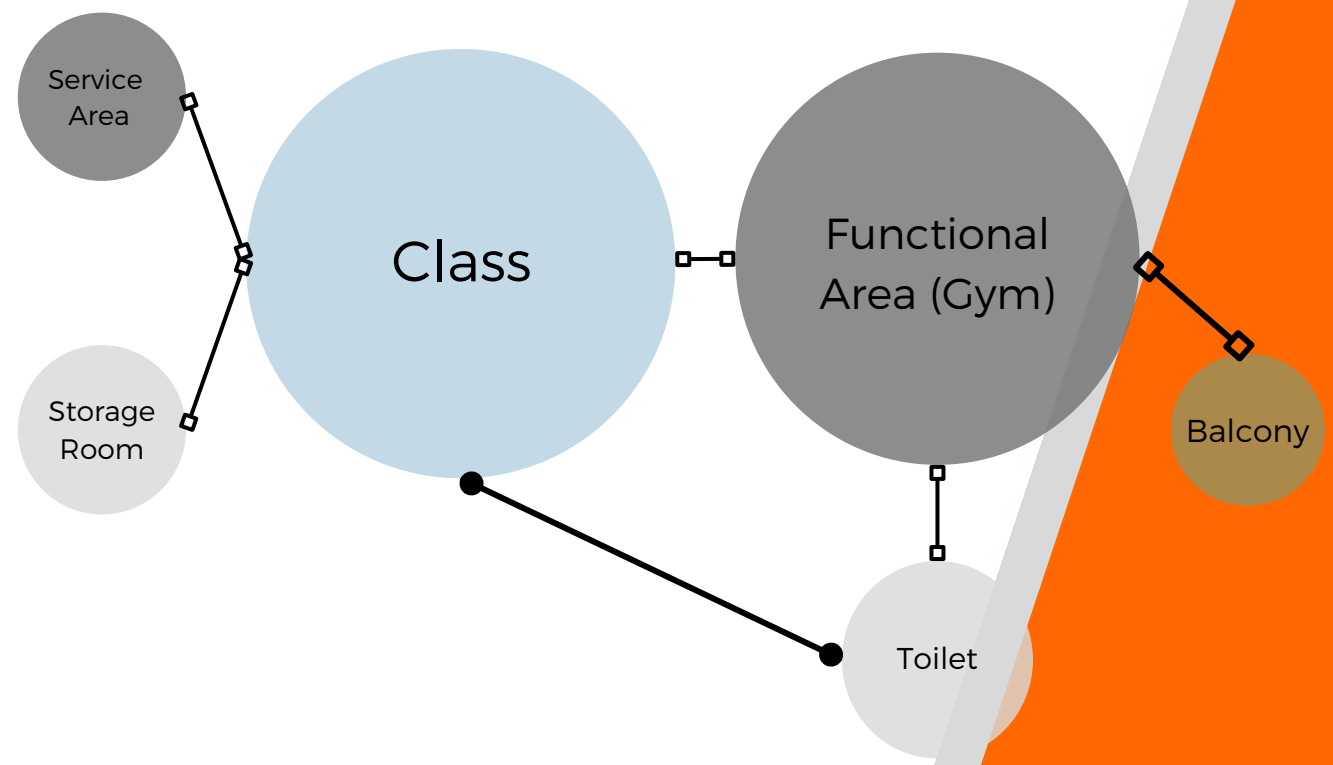
Data Eksisting

Bubble Diagram

LANTAI 1



LANTAI 2



- Bersebelahan
- Berdekatan
- ┌—┐ Berjauhan

Data Eksisting

Karakteristik Ruang

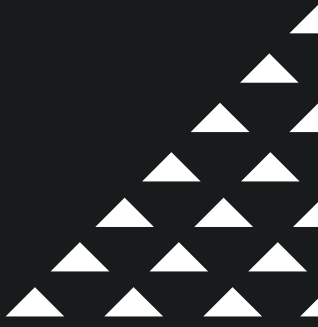
Nama Ruang	Pencahayaannya		Penghawaan		Akustik		Security		Information	Fire Protection	Environmental Qualities
	Aktif	Pasif	Aktif	Pasif	Aktif	Pasif	Aktif	Pasif			
LANTAI 1											
Receptionist	LED light ceiling mounted daylight 4000k	Jendela	AC	-Jendela	-	-	-	Kunci pintu	Media Promosi	Fire/ smoke detection, APAR	Suasana nyaman untuk pengguna
Seating Area	LED light ceiling mounted daylight 4000k	Jendela	AC	-Jendela	-	-	-	Kunci pintu	-	-	Suasana nyaman untuk pengguna
Functional Area (Gym)	LED light ceiling mounted daylight 4000k	Jendela	AC	-Jendela	-	-	-	Kunci pintu	-	Fire/ smoke detection, APAR	Suasana nyaman untuk pengguna
Staff Room	LED light ceiling mounted daylight 4000k	-	AC	-	-	-	-	Kunci pintu	-	-	-
Musholla	LED light ceiling mounted daylight 4000k	-	-	-	-	- Acoustic foam/ peredam	-	Kunci pintu	Arah Kiblat	-	-
Rest Room	LED light ceiling mounted daylight 4000k	-	-	-	-	- Acoustic foam/ peredam	-	Kunci pintu	Signage	Fire/ smoke detection, APAR	Nyaman untuk pengguna
Service Area	LED light ceiling mounted daylight 4000k	-	-	-	-	-	-	- Kunci pintu - Sandblast di beberapa area	Signage	Fire/ smoke detection, APAR	-
Staff Toilet	LED light ceiling mounted daylight 4000k	-	-	-	-	-	-	Kunci pintu	Signage	-	-
Lobby	LED light ceiling mounted daylight 4000k	-Jendela	AC	-	-	-	-	Kunci pintu	Signage	Fire/ smoke detection, APAR	Suasana nyaman untuk pengguna

Data Eksisting

Karakteristik Ruang



LANTAI 2											
Functional Area (Gym)	LED light ceiling mounted daylight 4000k	Jendela	AC	-Jendela		-	-	Kunci pintu	Signage	Fire/ smoke detection, APAR	Suasana nyaman untuk pengguna
Toilet	LED light ceiling mounted daylight 4000k	-	-	-		-	-	Kunci pintu	Signage	Fire/ smoke detection, APAR	Nyaman untuk pengguna
Class	LED light ceiling mounted daylight 4000k	-	AC	-		- Acoustic foam/ peredam	-	Kunci pintu	Signage	Fire/ smoke detection, APAR	Suasana nyaman untuk pengguna
Storage Room	LED light ceiling mounted daylight 4000k	-	-	-		-	-	Kunci pintu	-	-	Dapat menyimpan barang dengan aman
Service Area	LED light ceiling mounted daylight 4000k	Jendela	-	-		-	-	Kunci pintu	-	Fire/ smoke detection, APAR	-
Balcony	LED light ceiling mounted daylight 4000k	Jendela	-	-Jendela		-	-	Kunci pintu	-Nama Ruangan	-	Suasana nyaman untuk pengguna



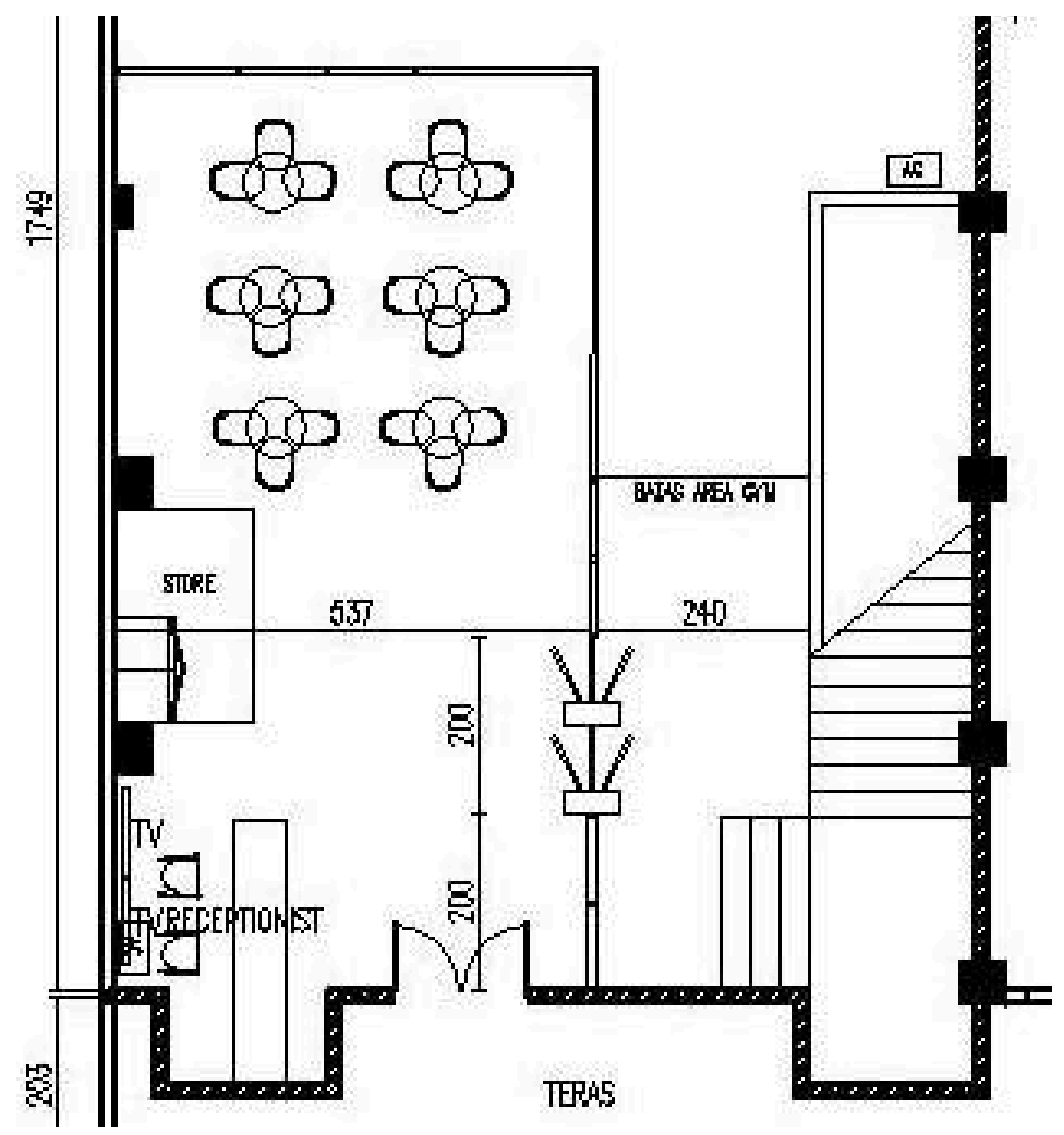
Data Eksisting

Besaran Ruang

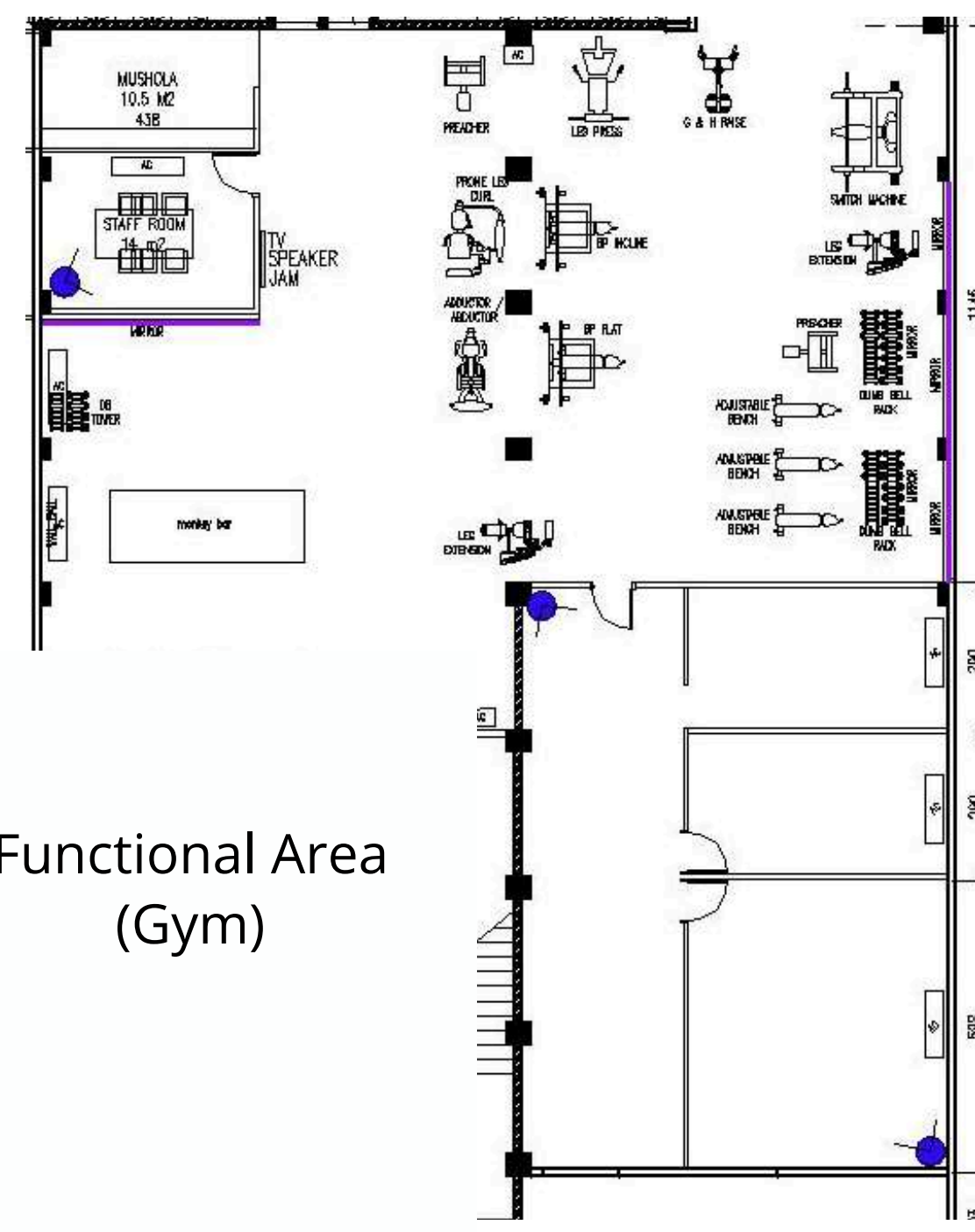
No.	Ruang	Panjang (m)	Lebar (m)	Luas (m ²)	Kapasitas (orang)	Perabot
LANTAI 1						
1	Receptionist	5,26	2,40	12,62	2	1 Meja, 2 Kursi, 2 Kabinet
2	Seating Area	5,38	4,42	23,78	18	6 meja, 18 kursi
3	Functional Area (Gym)	16,42	15,18	249,26	15	1 DB Tower, 2 DB Rack, 3 Adjustable Bench, 1 Leg Extension, 1 Smith Machine, 1 Abductor, 1 Curl Leg, 1 BP Incline, 1 BP Flat, 1 Decline Bench, 1 G&H Raise Bench, 1 Leg Press, 1 Ball Rack, 1 Monkey Bar
4	Staff Room	4,39	3,23	14,18	6	2 nakas, 6 Kursi, 1 Meja Kantor
5	Musholla	4,33	2,43	10,52	7	1 kabinet, 1 closet, 1 shower
6	Rest Room	11,40	5,80	66,12	24	12 Kabinet, 5 Bench, 6 Shower, 3 Kloset, 2 Urinoir, 4 Wastafel
7	Service Area	3,84	3,56	13,67	4	1 kabinet
8	Staff Toilet	1,81	1,35	2,44	1	1 Kloset
9	Lobby	6,15	5,42	33,33	4	2 Turnstile Gate
LANTAI 2						
1	Functional Area (Gym)	13,42	10,64	142,79	15	1 C & C Press, 6 Kursi, 2 side table, 1 Pec Fly, 1 Dip Chin, 2 Back Machine Set, 1 Samsak, 4 Treadmill
2	Toilet	3,26	1,91	6,23	1	1 Kloset
3	Class	15,09	11,44	172,63	35	-
4	Storage Room	3,18	2,79	8,87	1	2 Kabinet
5	Service Area	5,28	2,79	14,73	1	-
6	Balcony	9,76	1,85	18,06	3	-
TOTAL						789,23

Data Eksisting

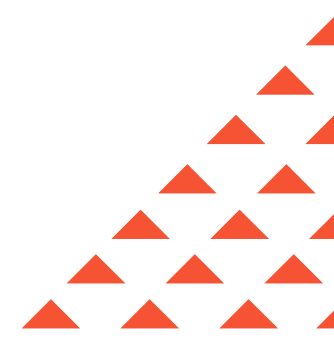
Besaran Ruang (Lantai 1)



Area Resepsionis, Lobby dan Seating Area

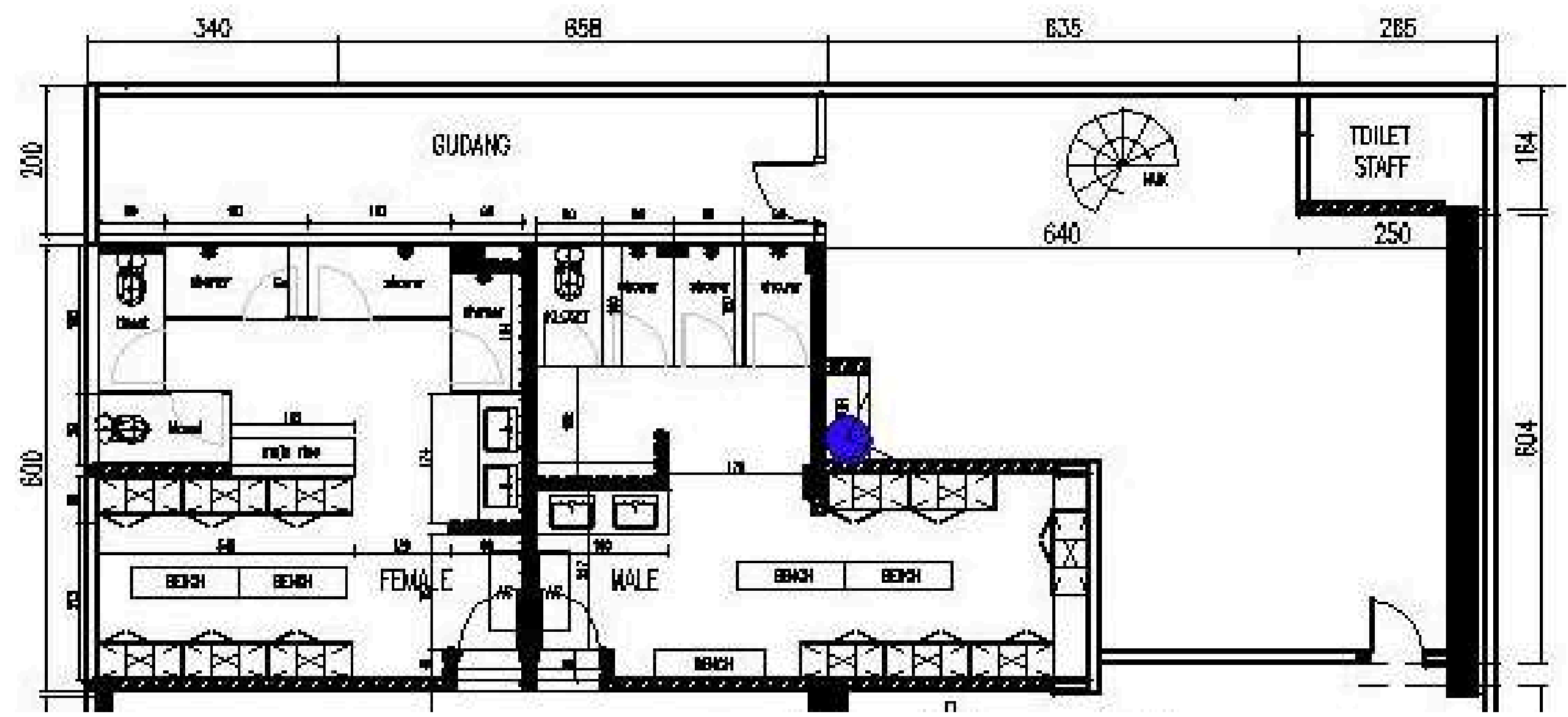


Functional Area (Gym)

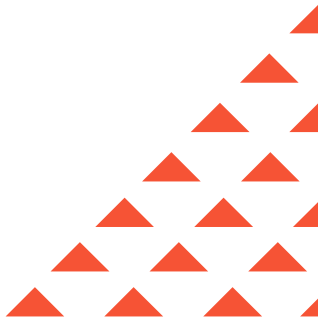


Data Eksisting

Besaran Ruang (Lantai 1)

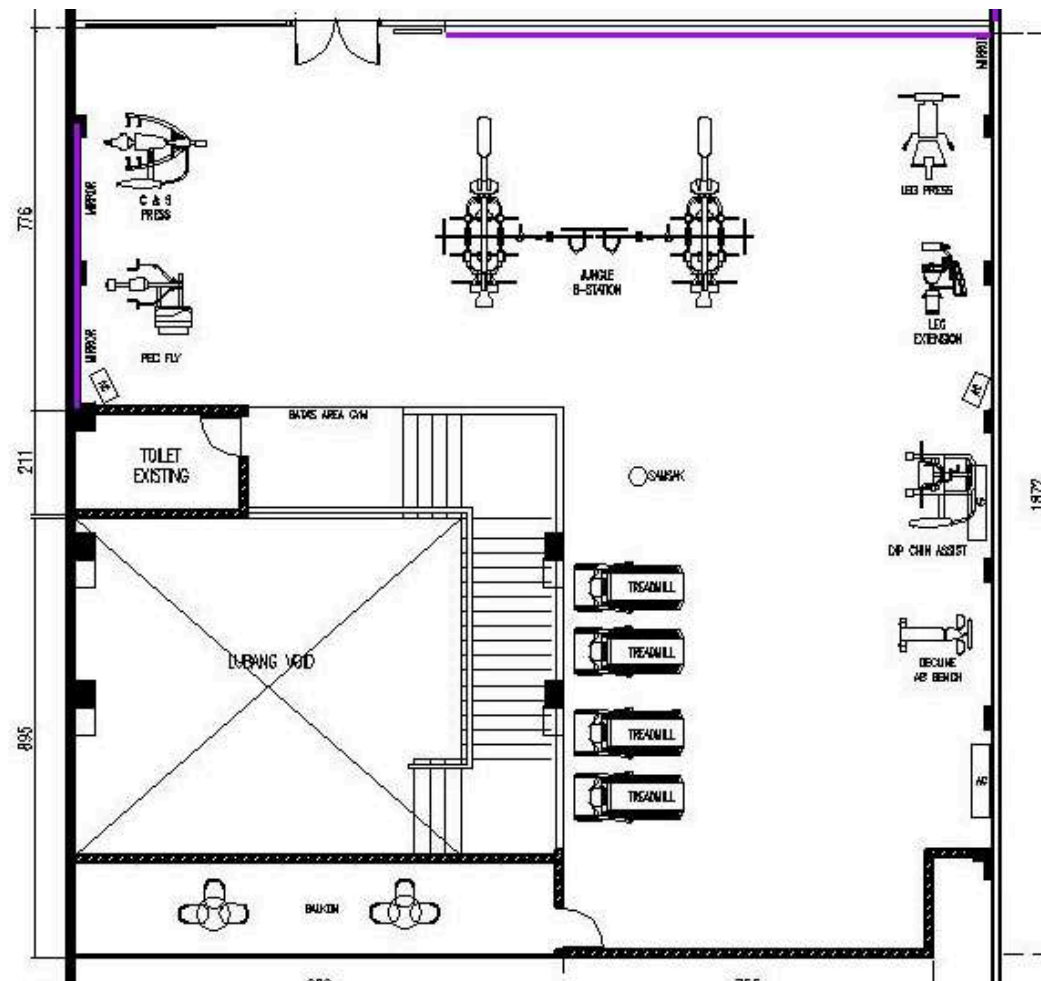


Rest Room, Service Area, Staff Toilet

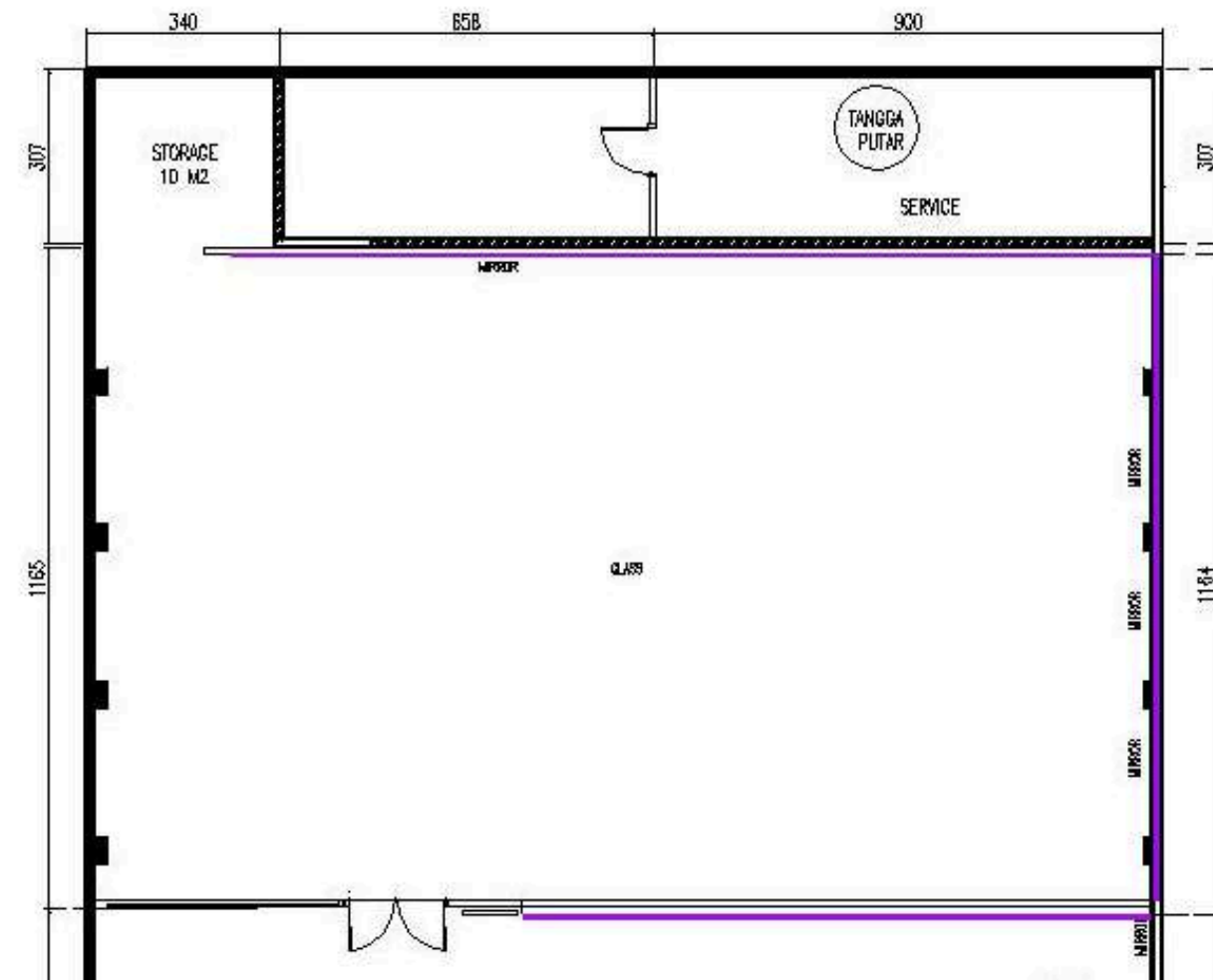


Data Eksisting

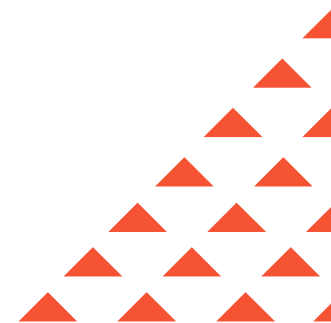
Besaran Ruang (Lantai 2)



Functional Area (Gym),
Balcony, Toilet

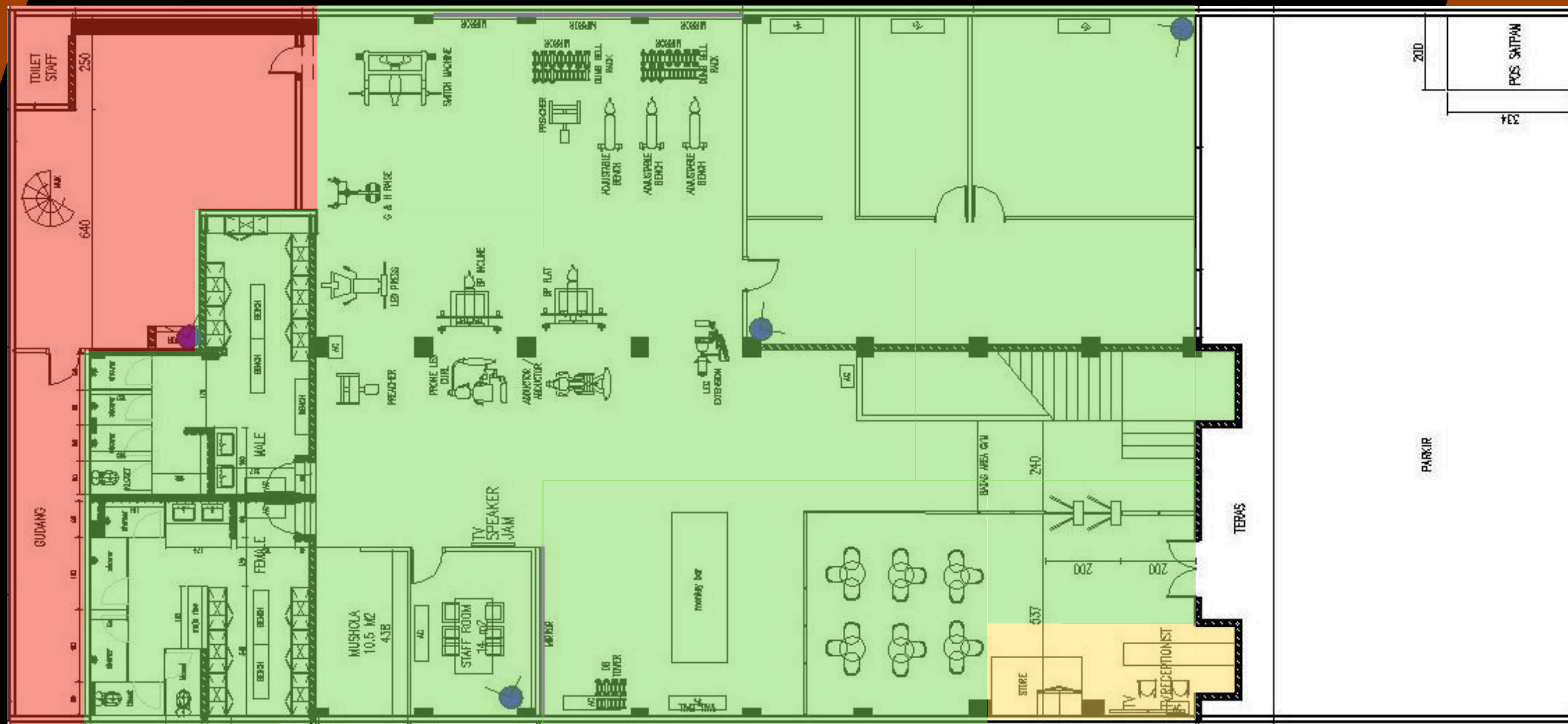


Class, Storage Room,
Service Area



Zoning Eksisting

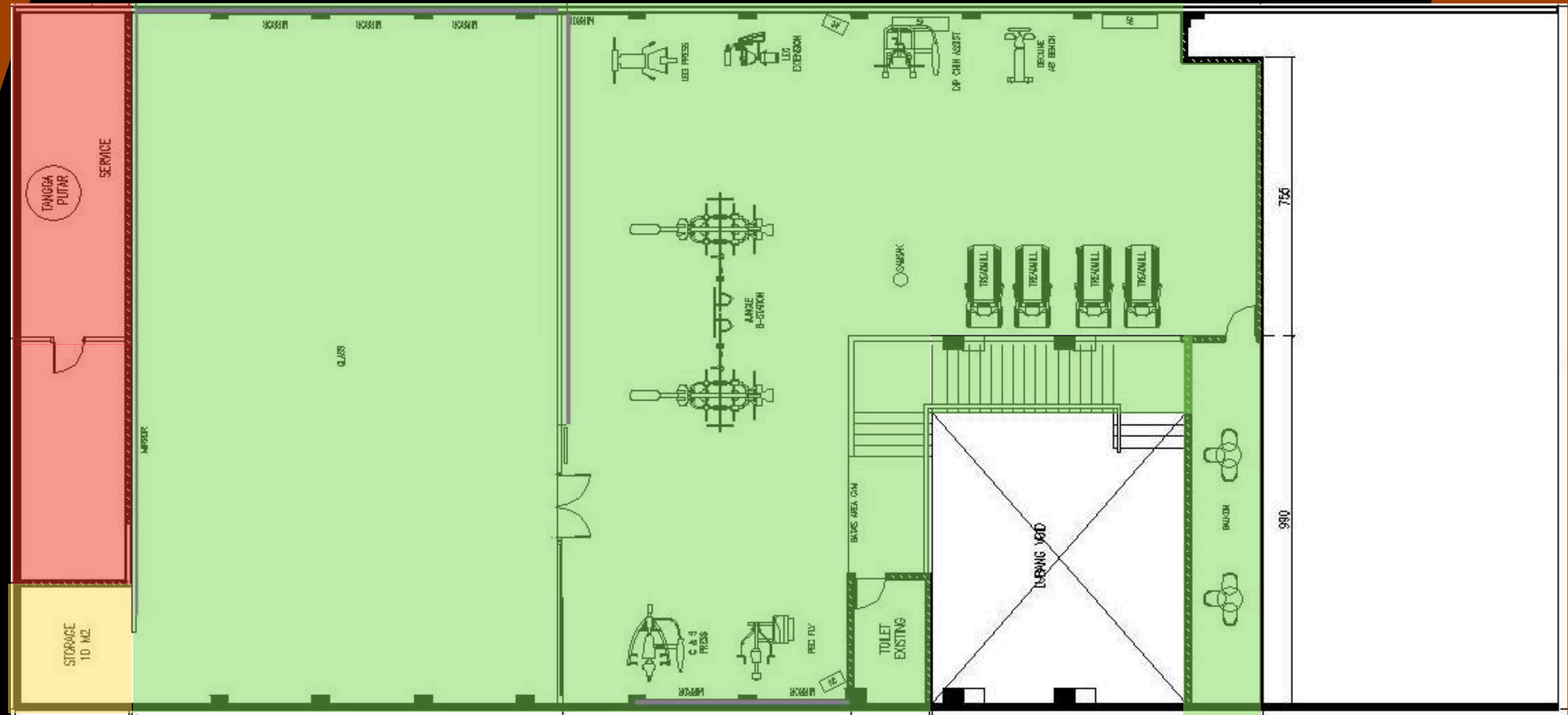
Layout Lantai 1



publik
 semi-publik
 privat

Zoning Eksisting

Layout Lantai 2



▲
▲
▲

publik
 semi-publik
 privat